



# AUCTION

LEADING THE INDUSTRY SINCE 1945

WEDNESDAY – JUNE 27, 2018 – 4:30 PM  
REAL ESTATE SELLS AT 6:00 PM

## William & Shirlene Wood

TWO 1.2+ ACRE LOTS

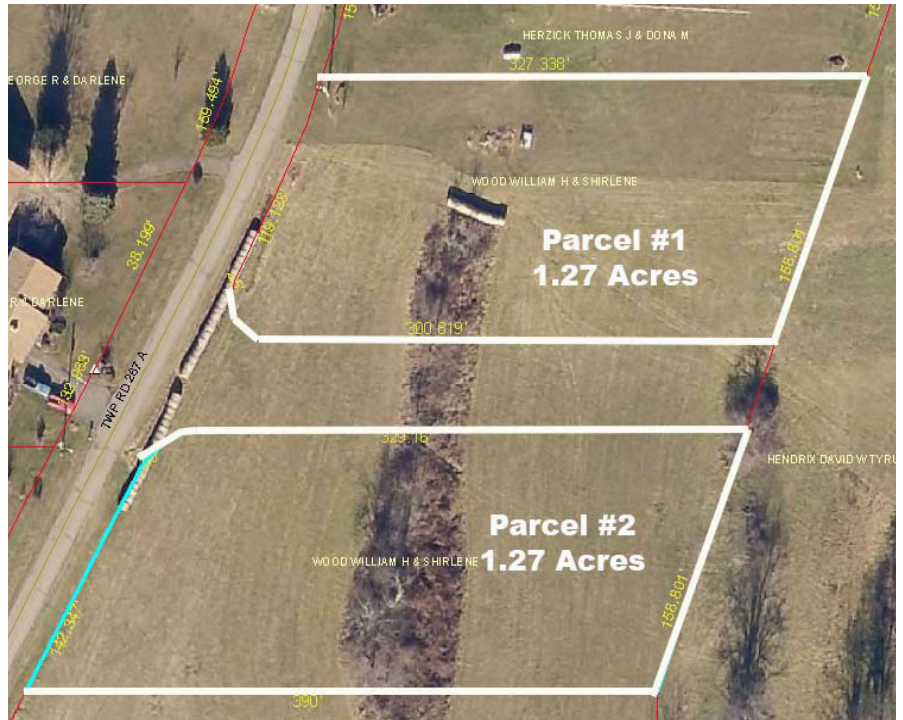
Tractors – Farm Machinery – Skid Loaders - Dozer  
Jefferson Co. – Springfield Twp.

Absolute auction, division of interest, all sells to the highest bidders on location:  
**197 TWP. RD. 267, AMSTERDAM, OH 43903**

Directions: Take St. Rt. 43 north of Rt. 22 at Steubenville through Richmond to Twp. Rd. 267 & left – or – Rt. 43 3 miles south of Amsterdam to Twp. Rd. 267 and right. Watch for KIKO signs.

**Real Estate:** Two 1.27-acre lots – open land – dead end street – lays nice – sold choice – located just past the farm to Twp. Rd. 267A and left to land.

**TERMS ON REAL ESTATE:** 10% down auction day, balance due at closing. A 10% buyer's premium will be added to the highest bid to establish the purchase price, which goes to the seller. Any desired inspections must be made prior to bidding. All information contained herein was derived from sources believed to be correct. Information is believed to be accurate but not guaranteed.



Information is believed to be accurate but not guaranteed.



330.455.9357 • kikoauctions.com



**Tractors – Skid Loader – Truck – Stock Trailer:** Farmall 656D with front loader, 3 pt. – Farmall 826D, WF, fast hitch – Farmall 560 diesel, WF, fast hitch – Farmall super “M” gas – Farmall 504 gas with loader – Farmall super “M” with loader – Farmall H w/ Kelly loader – Farmall 460D, needs work – Ford 801 gas, p. steering, 3 pt. – JD 430 dozer with blade & PTO – Farmall Super “C” w/ fast hitch – Case 1818 gas skid loader w/ manure forks – JD 325 diesel skid loader w/ 2 buckets, 800 hrs. – older Cub tractor – '87 GMC stake-bed 3500 4 sp truck – Moritz 12' bumper livestock trailer, very good – 24' Kauffman GN Beaver-tail equipment trailer, very good – car hauler trailer – JD 165 lawn tractor

**Hay, Tillage & Planting Equipment – Etc.:** One-owner NH 7230 10' discbine, 2 seasons – one-owner NH 450 silage sp. 40th anniversary 4X5 belt baler, 2 seasons – 3 pt. spear – NH 256 hay rake – NH 269 sq. baler – Int. sickle bar mower – FH sickle bar mower – Woods 8' pull-type brush hog – H & S RT5200 hyd. fold 4-star tedder – Pequa 6-bale wagon – NI 3716 box manure spreader, 1 beater – hay & grain elevator – (2) 3 pt. cone spreaders – hyd. log splitter with gas eng. – Woods 3 pt. back blade – 3 pt. 200-gal. sprayer – 2 homemade feed wagons – 6 bale rings – belt alum. single-chain elevator w/ carriage – old silage wagon – older gravity box – VG NI 523 one-row corn planter – NH 352 port. grinder mixer – Int. 2-row dry corn planter – Int. 13 hole disc drill – cattle chute & head gate Palco – AC 90 pull-type auger feed combine – 6 X 32 grain auger – Bale King wagon and gear – folding wheel rake – Hutchmaster trans rolling disc plow – three gravity boxes with gears – alum. single chain elevator – few older drag plows – other items not mentioned

**Note:** Good clean sale. Nothing shown until sale day. Not many small items, don't be late. Equipment at 4:30, real estate at 6 PM.

**TERMS ON CHATELS:** Driver's license or State ID required to register for bidder number. Cash, Check, Debit Card, Visa, or Master Card accepted. 4% buyer's premium on all sales; 4% waived for cash or check. Information is believed to be accurate but not guaranteed.

**Auctioneer/Realtor:** Russell T. (Rusty) Kiko, Jr., C.A.I., ext 115, 330-495-0923



Auctioneer/Realtor®  
**RUSSELL T. (RUSTY) KIKO, JR.**  
 330.495.0923  
 rustykiko@kikocompany.com



**330.455.9357 • kikoauctions.com**

